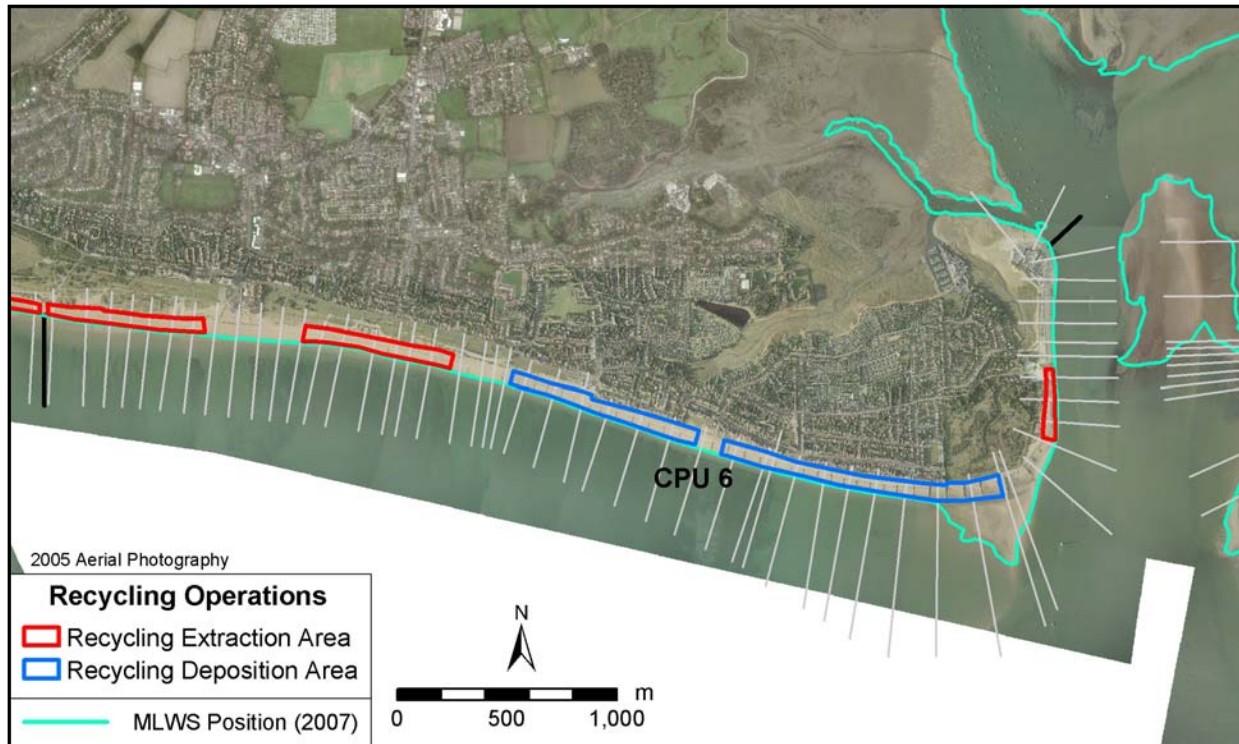


## Policy Unit: 5a CPU6

### Sandy Point to Inn on the Beach

Topographic Beach Profiles 5a00240 – 5a00357



Note: Extraction and deposition zones are indicative only

#### Summary

The beach along this frontage is a mixture of gravel and sand with a higher sand content towards the east. With a history of rapid erosion and flooding, East Hayling has traditionally been difficult to defend. Minor changes in offshore wave direction can reverse drift directions, causing erosion and overtopping.

The drift divide at Eaststoke means that beach material is transported both northwards into the harbour entrance and westwards towards Inn on the Beach. Since 1985 there has been (i) a continuing programme of annual gravel recycling, taking accretion excesses to areas of deficit over the existing beach, and (ii) a series of capital recharge schemes (Havant Borough Council, 1999, 2000). Since 1995 a total of 475,000m<sup>3</sup> of sediment has been recycled along this frontage with an extra 759,000 m<sup>3</sup> added through capital recharges.

#### Survey Regime

| Survey type                             | Frequency       | Profile spacing/survey extent      |
|---|-----------------|------------------------------------|
| <i>Topographic baseline</i>             | Annual          | 50m to MLWS                        |
| <i>Topographic interim profile</i>      | Spring & Autumn | 100 - 200m to MLWS                 |
| <i>Bathymetry</i>                       | 5 years         | 50m profiles, MLWN to 1km offshore |
| <i>Ortho-photography</i>                | 5 years         | MLWN                               |
| <i>Non-rectified aerial photography</i> | Annual          | MLWN                               |
| <i>Lidar</i>                            | Years 1, 2, 3   | MLWN                               |
| <i>Habitat mapping</i>                  | 5 Years         | Extent of aerial photography       |

## Summary of beach operations

Nourishment volumes at Eastoke, Hayling Island, 1985 to 2009

| Year        | Nourishment Volume ( m <sup>3</sup> ) |               |                |               | Total Volume ( m <sup>3</sup> ) | Cum. Total Volume ( m <sup>3</sup> ) |
|-------------|---------------------------------------|---------------|----------------|---------------|---------------------------------|--------------------------------------|
|             | Marine Recharge                       | Marine Bypass | Land Recycling | Land Recharge |                                 |                                      |
| 1985        | 510,953                               | -             | -              | -             | 510,953                         | 510,953                              |
| 1986        | -                                     | -             | -              | -             | -                               | 510,953                              |
| 1987        | -                                     | -             | 45,780         | -             | 45,780                          | 556,733                              |
| 1988        | -                                     | -             | 25,075         | -             | 25,075                          | 581,808                              |
| 1989        | -                                     | -             | 33,158         | -             | 33,158                          | 614,966                              |
| 1990        | -                                     | -             | -              | -             | -                               | 614,966                              |
| 1991        | -                                     | -             | 18,637         | -             | 18,637                          | 633,603                              |
| 1992        | -                                     | -             | -              | -             | -                               | 633,603                              |
| 1993        | -                                     | -             | 28,884         | -             | 28,884                          | 662,487                              |
| 1994        | -                                     | -             | 22,572         | -             | 22,572                          | 685,059                              |
| 1995        | -                                     | -             | 15,800         | -             | 15,800                          | 700,859                              |
| 1996        | -                                     | -             | 24,392         | -             | 24,392                          | 725,251                              |
| 1997        | -                                     | 26,000        | 20,256         | -             | 46,256                          | 771,507                              |
| 1998        | -                                     | -             | 20,062         | -             | 20,062                          | 791,569                              |
| 1999        | -                                     | -             | 20,328         | -             | 20,328                          | 811,897                              |
| 2000        | -                                     | -             | 20,400         | -             | 20,400                          | 832,297                              |
| 2001        | -                                     | -             | 23,925         | -             | 23,925                          | 856,222                              |
| 2002        | -                                     | 50,000        | 20,006         | -             | 70,006                          | 926,228                              |
| 2003        | -                                     | -             | 21,351         | -             | 21,351                          | 947,579                              |
| 2004        | -                                     | -             | 22,853         | -             | 22,853                          | 970,432                              |
| 2005        | -                                     | -             | 21,290         | 1,463         | 22,753                          | 993,185                              |
| 2006        | -                                     | -             | 10,764         | 1,436         | 12,200                          | 1,005,385                            |
| 2007        | -                                     | 75,763        | 14,580         | 820           | 91,163                          | 1,096,548                            |
| 2008        | 25,196                                | -             | 22,163         | -             | 47,359                          | 1,143,907                            |
| 2009        | 65,196                                | -             | 22,648         | 2,294         | 90,138                          | 1,234,045                            |
| Total (3sf) | 601,000                               | 152,000       | 475,000        | 6,000         | 1,234,000                       | 1,234,000                            |

Full details of beach operations can be obtained from Havant Borough Council or from the Channel Coastal Observatory ([www.channelcoast.org](http://www.channelcoast.org))