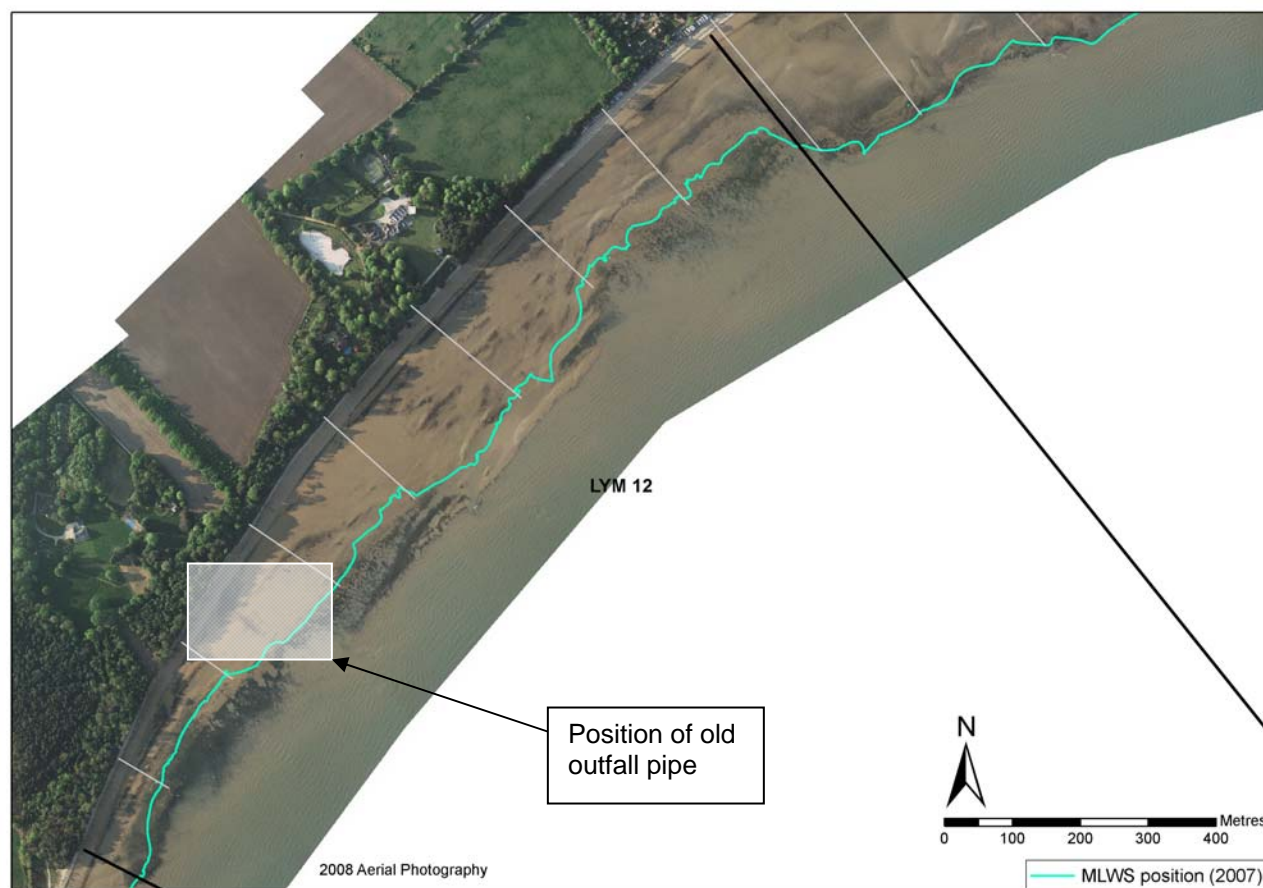


Policy Unit: 5c LYM12

South of Bourne Gap to Hillhead

Topographic Beach Profiles 5c00301 – 5c00277



Summary

This stretch of coastline, in the central section of Stanswood Bay, comprises a narrow shingle beach in front of a soft sand cliff, approximately 5 to 10m in height. The upper beach grades into a shallow foreshore of gravels and sands extending seawards up to 160m. Softwood timber groynes and revetments extend along the majority of this unit. The removal of an outfall pipe in September 2002 caused material to be redistributed in an easterly direction, consistent with the general direction of littoral drift in this area.

Survey Regime

| Survey type | Frequency | Profile spacing/survey extent |
|---|-------------------|-------------------------------|
| <i>Topographic baseline</i> | 5 years | 50m to MLWS |
| <i>Topographic interim profile</i> | Spring and Autumn | 200m to MLWS |
| <i>Bathymetry</i> | 5 years | 50m profiles to 1km offshore |
| <i>Ortho-photography</i> | 5 years | MLW |
| <i>Non-rectified aerial photography</i> | Annual | MLW |
| <i>Lidar</i> | 5 years | MLW |
| <i>Habitat mapping</i> | 5 Years | Extent of ortho-photography |