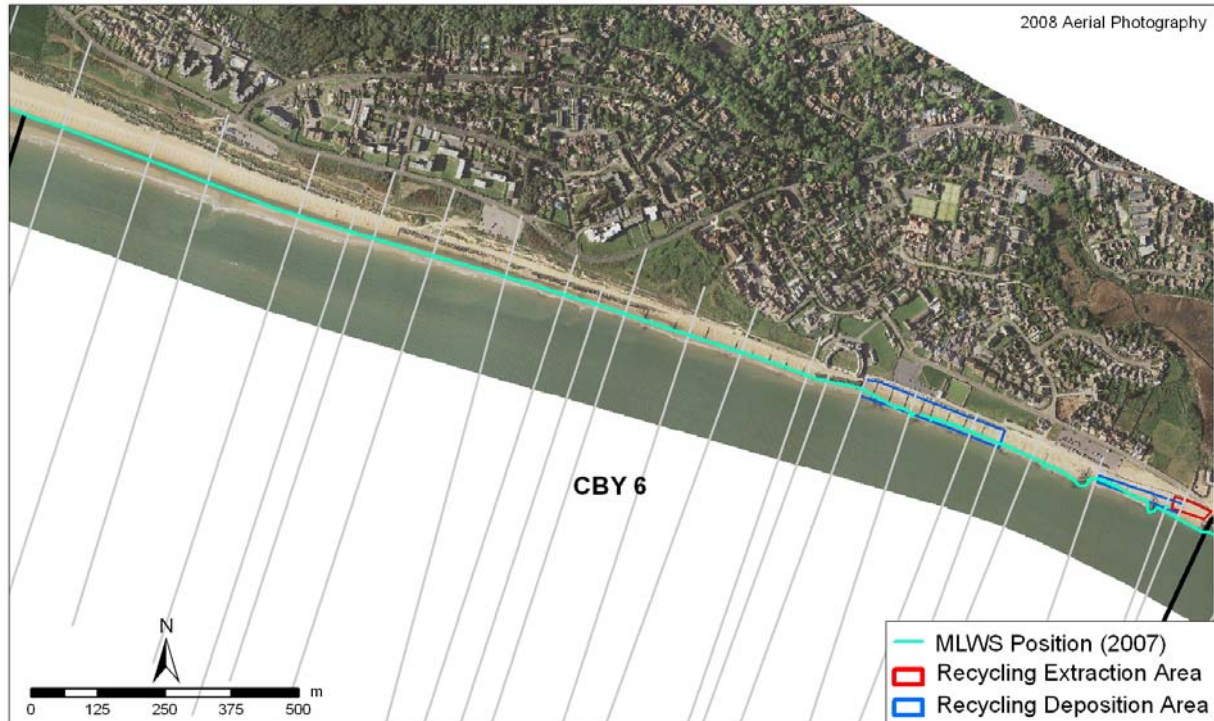


Policy Unit: 5f CBY6

Milford-on-Sea

Topographic Beach Profiles 5f00112 – 5f00068



Summary

This unit is fronted by a mixed sand and shingle beach which varies in width above MLWS from approximately 40m in the east to 120m in the west. The majority of the unit is backed by seawall with additional rock armour protecting the central section and timber groynes along the eastern section at approximately 30m intervals. The direction of sediment transport along this unit is generally from west to east. However, the numerous cross shore structures along this frontage act to reduce this transport and stabilise the beach. Towards the central and western end of the unit, the beach is backed by eroding cliffs which are afforded some protection by both the beach and the seawall/revetment. The beach immediately east of the White House has experienced considerable erosion in recent times, including exposure of the clay bedrock in August 2008. The existing rock revetment in front of the White House has since been extended eastwards by approximately 25m, including the addition of a rock armour groyne to replace the old wooden groyne. This rock armour is now largely covered by shingle.

Beach works at Milford were limited until June 2008 when recycled material from North Point and from near the Hurst revetment was placed in front of the beach huts at Milford where beach levels were low. Subsequent beach works continued in the winter of 2008/2009 with further, ongoing works during 2009.

Survey Regime

Survey type	Frequency	Profile spacing/survey extent
<i>Topographic baseline</i>	Annual	15-75m to MLWS
<i>Topographic interim profile</i>	Spring and autumn	30-180m to MLWS
<i>Bathymetry</i>	Annual	50m profiles to 1km offshore
<i>Ortho-photography</i>	5 years	MLWN
<i>Non-rectified aerial photography</i>	Annual	MLWN
<i>Lidar</i>	Annual	MLWN
<i>Habitat mapping</i>	5 Years	Extent of ortho-photography

Summary of beach operations

Date	Operation	Quantity (m ³)	Location/Notes
2009			
2008			
June	Extraction	600	Reclaimed from top of beach in front of the Hurst depot
June	Deposition	600	Deposited on beach in front of seawall east of the White House
2007			
No recycling			
2006			
No recycling			
2005			
No recycling			
2004			
17/12/04	Deposition	364	Material won from North Point (LYM1) and placed along 50m section between 5f00069 and 5f00073.

Full details of beach operations can be obtained from New Forest District Council