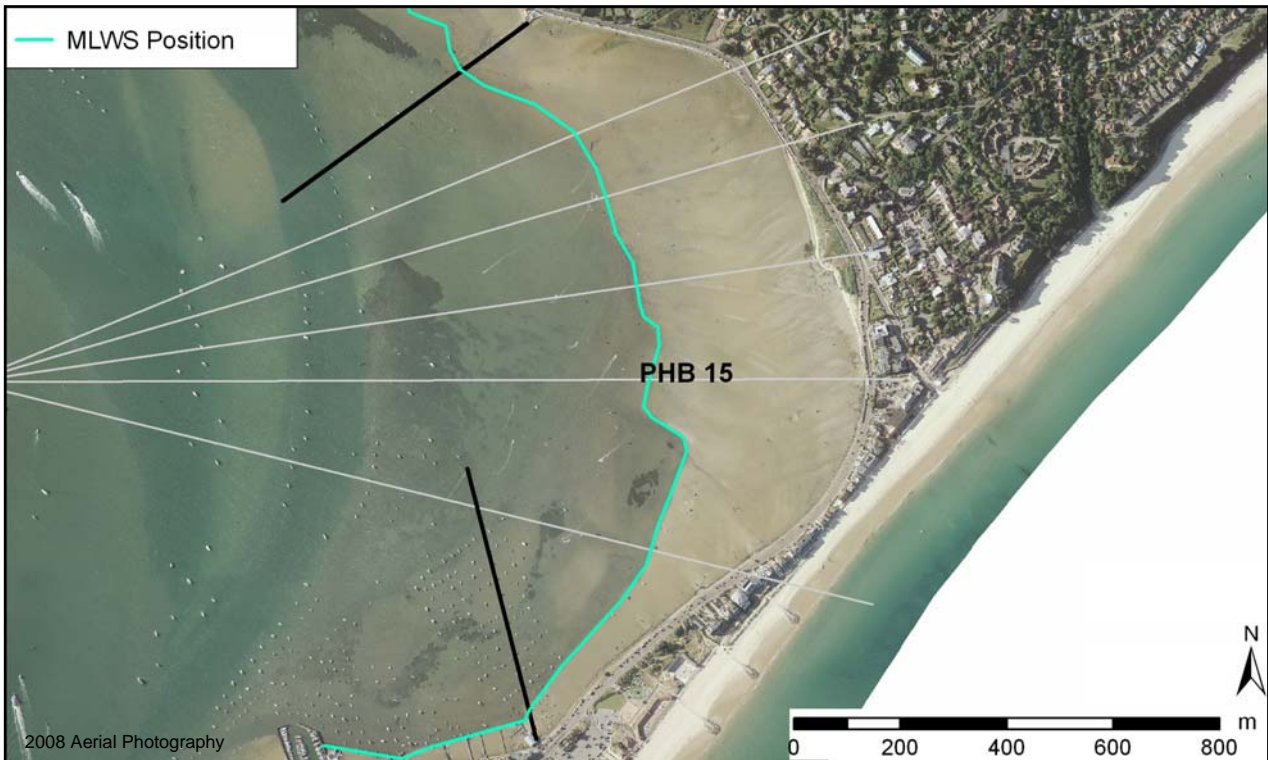


## Policy Unit: 5f PHB15

### Whitley Lake

Topographic Beach Profiles 5f00540a to 5f00540f



### Summary

Whitley Lake lies directly to landward of the Sandbanks Peninsula and, hence, is shielded from waves by the low lying spit. The foreshore consists of a narrow stretch of sandy beach and areas of dune vegetation, with inter-tidal mudflats extending into the harbour. A concrete seawall runs adjacent to the shoreline, protecting the main road and property on the Peninsula.

### Survey Regime

Survey type	Frequency	Profile spacing/survey extent
<i>Topographic interim profiles</i>	Annual	200 - 400m to MLWS
<i>Topographic baseline</i>	-	-
<i>Bathymetric baseline</i>	-	-
<i>Ortho-photography</i>	5 years	MLW
<i>Non-rectified aerial photography</i>	Annual	MLW
<i>Lidar</i>	3 years	MLW
<i>Habitat mapping</i>	5 years	Extent of ortho-photography