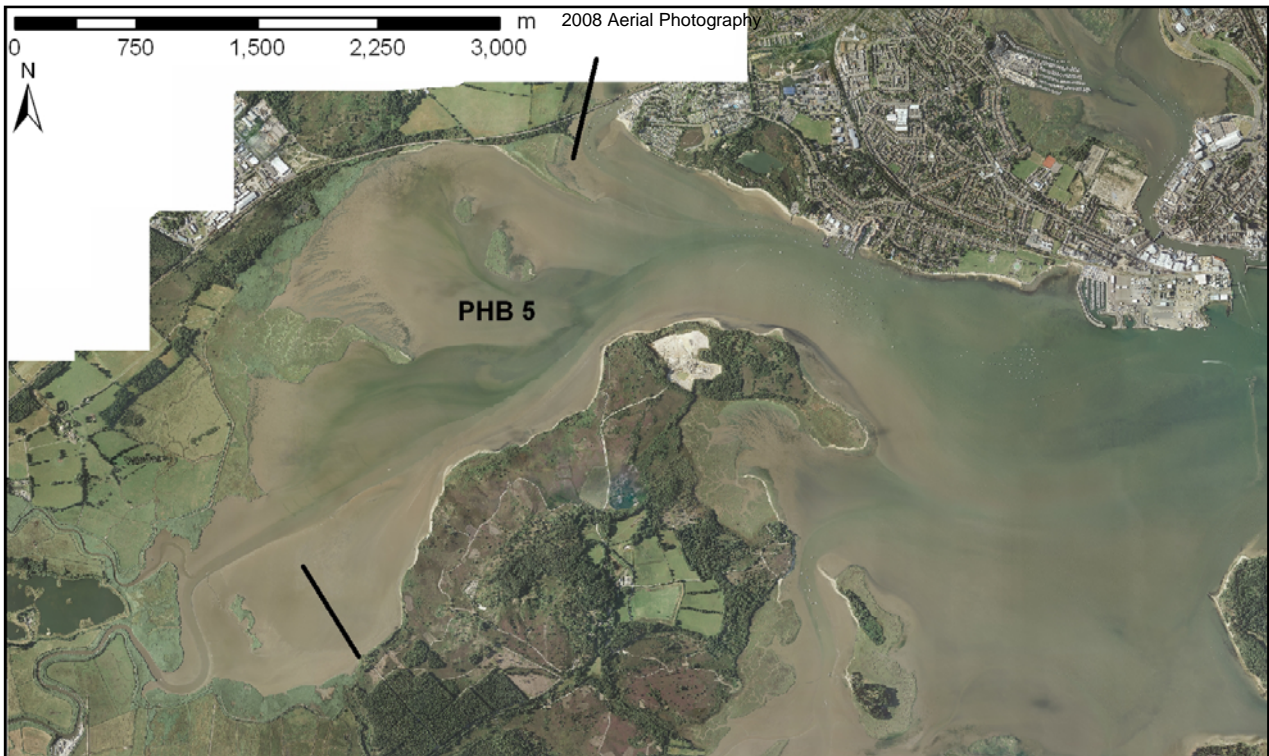


Policy Unit: 5f PHB6

Lytchett Bay



Summary

Lytchett Bay is in the north west corner of Poole harbour largely composed of soft mud fringed by marshland and embankment. The embankments to the east side of the bay have a residual life of greater than 20 years, whilst the embankment to the west is predicted to deteriorate in this epoch. To the south is the only opening to Poole harbour, with a railway bridge across the opening and Rockley Sands to the east. The bridge restricts sediment transport from the Sherford river resulting in a sediment sink. Saltmarsh loss is occurring on the north and west shore due to dieback of the spartina. No properties are predicted to be at risk from tidal or fluvial flooding during this period.

Survey Regime

Survey type	Frequency	Profile spacing/survey extent
<i>Topographic interim profiles</i>	N/A	N/A
<i>Topographic baseline</i>	N/A	N/A
<i>Bathymetric baseline</i>	N/A	N/A
<i>Ortho-photography</i>	5 years	MLW
<i>Non-rectified aerial photography</i>	Annual	MLW
<i>Lidar</i>	3 years	MLW
<i>Habitat mapping</i>	5 Years	As Required