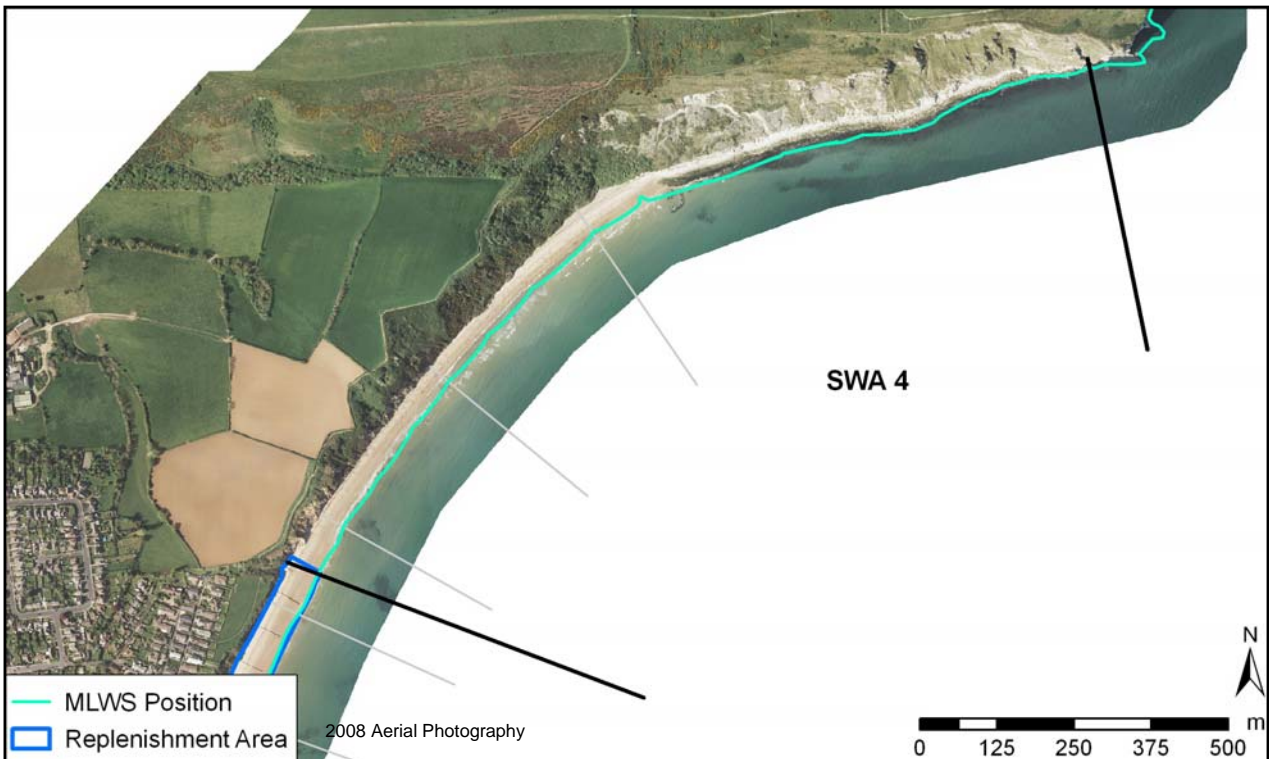


Policy Unit: 5f SWA4

Ballard Point to Sheps Hollow

Topographic Beach Profiles 5f00725 to 5f00742



Summary

This stretch of coastline is comprised of two geologically different rock types. To the north, there is near-vertical, resistant chalk cliffs, up to 50m in height, with a series of embayments, stacks and arches cut along joint planes in the chalk. In the centre of the unit, Punfield Cove marks a divide between the resistant chalk cliffs of Ballard Cliff and the relatively soft Wealden Beds to the south. The sandy beach in front of the cliffs gradually diminishes northwards, changing into a rockier substrate at the toe of the chalk cliffs. This unit is undefended and undeveloped.

Survey Regime

Survey type	Frequency	Profile spacing/survey extent
<i>Topographic interim profiles</i>	Annual	300 - 350m to MLWS
<i>Topographic baseline</i>	5 years	50m to MLWS
<i>Bathymetric baseline</i>	5 years	50m to 300m offshore
<i>Ortho-photography</i>	5 years	MLW
<i>Non-rectified aerial photography</i>	Annual	MLW
<i>Lidar</i>	3 years	MLW
<i>Habitat mapping</i>	5 years	Extent of ortho-photography